

BROOKES LIMITED

This exhibit shows the range of advertising postcards produced by Brookes Limited.

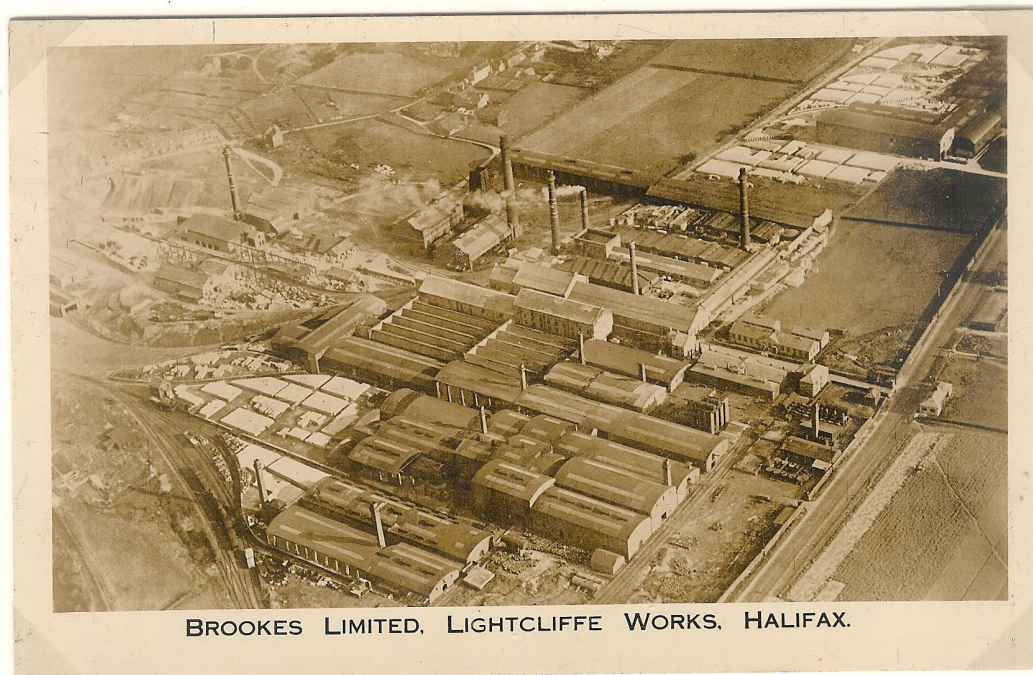
In 1840 Joseph Brooke founded a quarrying business with around twelve sites in the Hove Edge, Hipperholme, Lightcliffe and Southowram districts of West Yorkshire, UK. The company later added other quarries in Wales, Alderney & Guernsey and in Scandinavia.

Over the years the company expanded its product range into artificial stone, brick-making, house-building, nonslip flags, ornamental architecture and road-building.

In 1896, the company had patented the world's first nonslip flags which were made of the hard-wearing mineral silex found in the Lightcliffe area. These were marketed world-wide. They produced other patented products, including Granolite (a flooring material), Macrete (a non-skid road surfacing material), Magna (non-slip setts) and Perfecta (pressed stone flags).

In December 1900, Joseph Brooke & Sons and the Nonslip Stone Company merged to become Brookes Limited. They even had their own steamship to carry stone to customers plus one of the smallest industrial steam railways in the country, complete with a branch line from the Lancashire & Yorkshire Railway at Lightcliffe.

By 1910, around 500 local authorities and railway companies in Britain used nonslip stone. In 1930, the firm was the world's largest supplier of road and building materials. The company fell into decline in the 1960s with the mines and brickworks closing in 1969.



Real photographic postcard showing the extent of the Lightcliffe Works between the Wars

Bibliography -

Internet - Calderdale Companion, National Archives UK, Wikipedia, Brighouse Echo
The Hard York Nonslip Stone Co (Brookes Limited) Illustrated Booklet 1906 Edition
Brookes' Industrial Railways by S. A. LeLeux, The Oakwood Press 1972 (Locomotion Papers No.63)



BROOKES LIMITED, Halifax, Manchester, London, Aberdeen, Guernsey, Norway, Sweden.
ARCHITECTURAL DRESSINGS OF NONSLIP HARD YORK STONE. Head Office: HALIFAX.

The head office at Halifax, nick-named "The Hall", was designed by the company architect, R. Fielding Farrar and built in 1905. The design incorporated many of the company's products, including a 20 ft-long piece of granite from the firm's quarries in Scandinavia.

Divided back photolithographic card

BROOKES'
LTD.

**SETTS,
MACADAM,
KERB,
BUILDING
STONE,
DOCK WORK,
&c., &c.**

Chief Office: HALIFAX.

AND AT
LONDON,
MANCHESTER,
ABERDEEN, CONWAY,
GUERNSEY,
ALDERNEY, NORWAY,
SWEDEN.

3rd INTERNATIONAL ROAD CONGRESS EXHIBITION, LONDON, JUNE, 1913.

Brookes Limited were prominent exhibitors at the 3rd International Road Congress held in London from 23 to 28 June, 1913. A number of different postcards were produced for the occasion. Granite stone was their specialty, marketing a number of patented products.

Divided back photolithographic card



3rd INTERNATIONAL ROAD CONGRESS EXHIBITION, LONDON, JUNE, 1913.

BROOKES'
LTD.

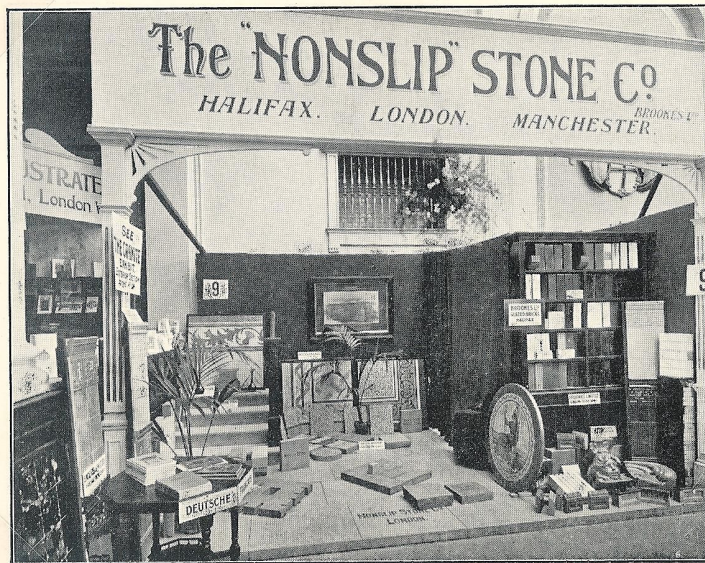
**SETTS,
MACADAM,
KERB,
BUILDING
STONE,
DOCK WORK,
&c., &c.**

Chief Office: HALIFAX.

AND AT
LONDON,
MANCHESTER,
ABERDEEN, CONWAY,
GUERNSEY,
ALDERNEY, NORWAY,
SWEDEN.

Nonskid Macrete was one of their patented products and was a road surfacing material. The floor area in front of their exhibition stand displayed this product with prominent signage.

Divided back photolithographic card



3rd INTERNATIONAL ROAD CONGRESS EXHIBITION, LONDON, JUNE, 1913.

**"Nonslip"
Stone.**

**FLAGS,
STEPS,
LANDINGS,
HEADS,
CILLS,
COPING,
ARCHITECTURAL
DRESSINGS,
MOSAIC,
TERRAZZO.**

Although merged into Brookes Limited in 1900 (along with Joseph Brooke & Sons), the name of the "Nonslip" Stone Co was so well known it was retained for marketing purposes. Brookes Limited even had a separate stand with this name at the 1913 Road Exhibition.

Divided back photolithographic card



3rd INTERNATIONAL ROAD CONGRESS EXHIBITION,
LONDON, JUNE, 1913.

BROOKES'
LTD.

HALIFAX, LONDON, MANCHESTER.

LEFT -

Magna (Cube Paving) was another patented product of Brookes Limited. Often referred to as "setts" they were a broadly rectangular quarried stone used for paving roads. They were particularly popular in the days of horse carts as it provided horses' hooves with better grip.

Divided back photolithographic card

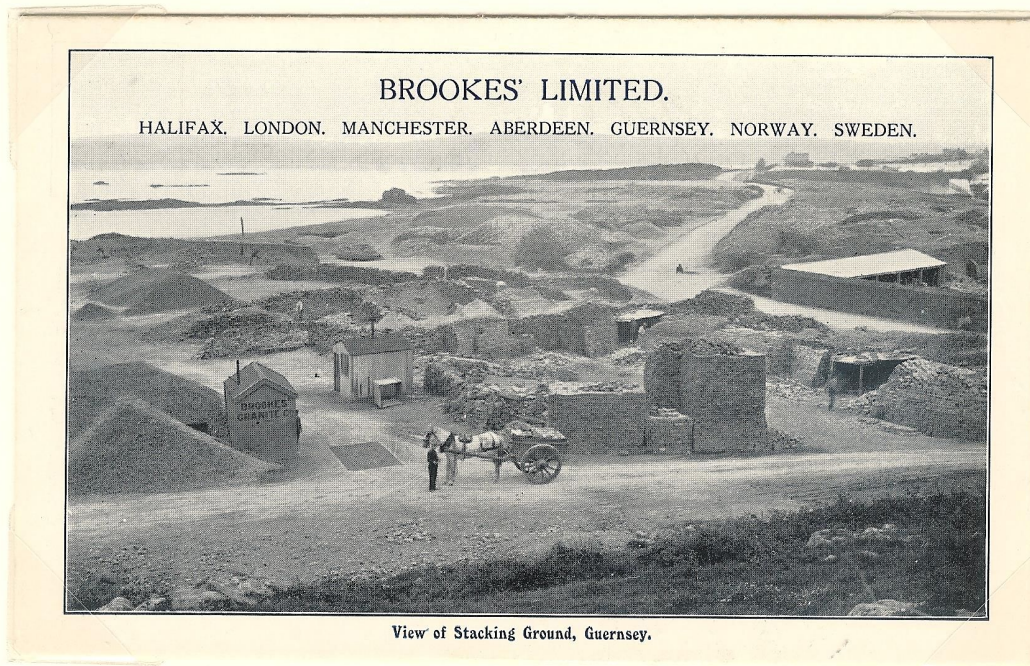
BELOW -

Brookes Limited were also present at the Building Exhibition, Olympia, London from 12 to 26 April 1920. Besides their Head Office in Halifax, they had offices in London, Manchester, Aberdeen & Conway as well as works offices in Guernsey, Alderney, Norway & Sweden.

Divided back photolithographic card by Ernest Milner, 3 Moss Hall Villas, Finchley N12

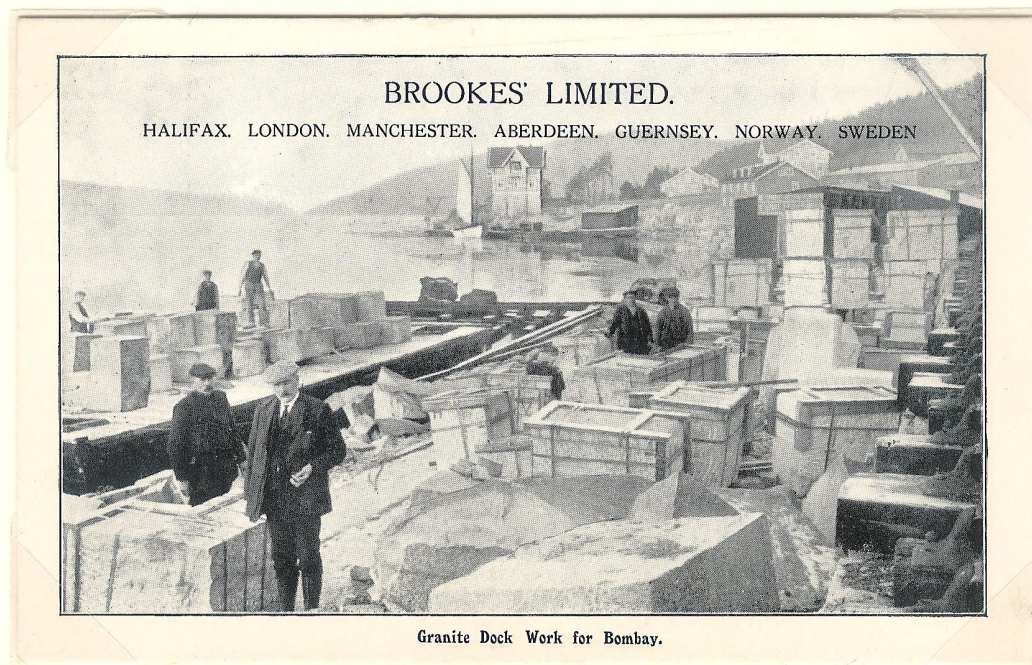


BUILDING EXHIBITION, OLYMPIA, 1920



By 1904, Brookes Granite Co. Ltd. operated quarries in Guernsey. All the stone was broken by hand as it tended to flake in the crushers. After WWI production centred on Alderney with production ceasing in Guernsey about 1921.

Extremely rare divided back photolithographic card

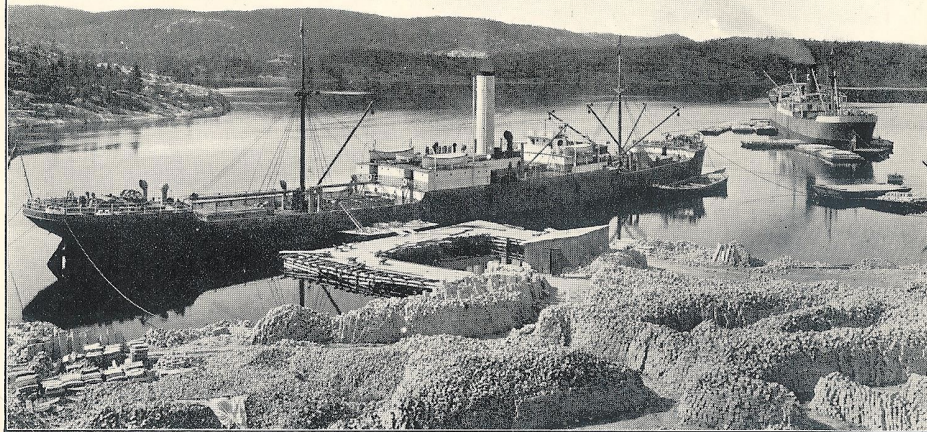


Circa 1900, Brookes Ltd owned quarries on both sides of the Idefjord, which now forms part of the southern boundary of Norway and Sweden. The quarry here at Ystehede, Norway produced fine grained blue granite quarried by hand using wedges which split very cleanly.

Divided back photolithographic card

BROOKES' LIMITED.

HALIFAX. LONDON. MANCHESTER. ABERDEEN. GUERNSEY. NORWAY. SWEDEN.



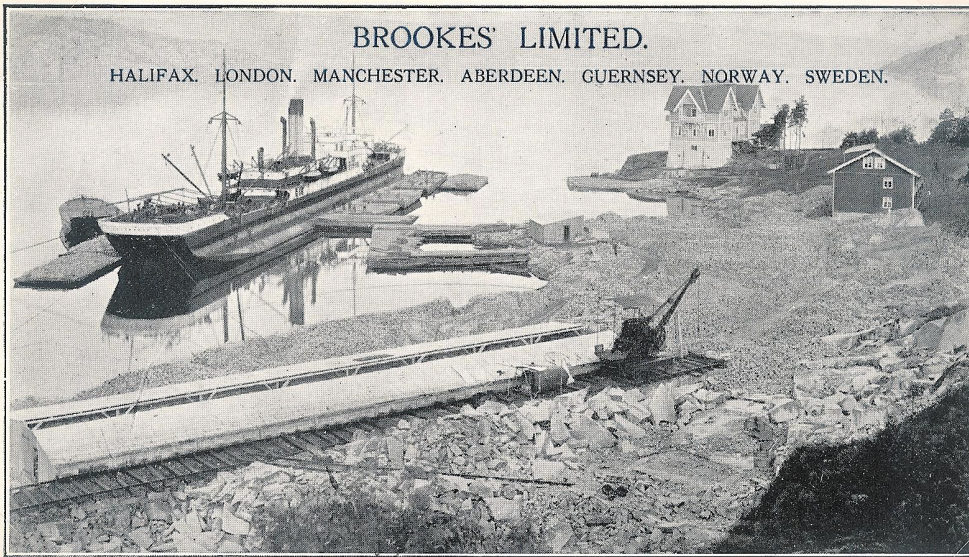
S.S. BRA KAR & S.S. DRUMCLIFFE Loading at Ystehede in Idefjord 12,500 Tons Granite Setts and Kerb for the Argentine.

The Idefjord was very sheltered, with a tidal range of only two feet. It froze in winter and ships were then loaded off the ice, horses drawing sledges of stone out to them. Brookes Granite Co. owned or leased 6,000 acres on the Norwegian side near Fredrikshald (now Halden).

Divided back photolithographic card

BROOKES' LIMITED.

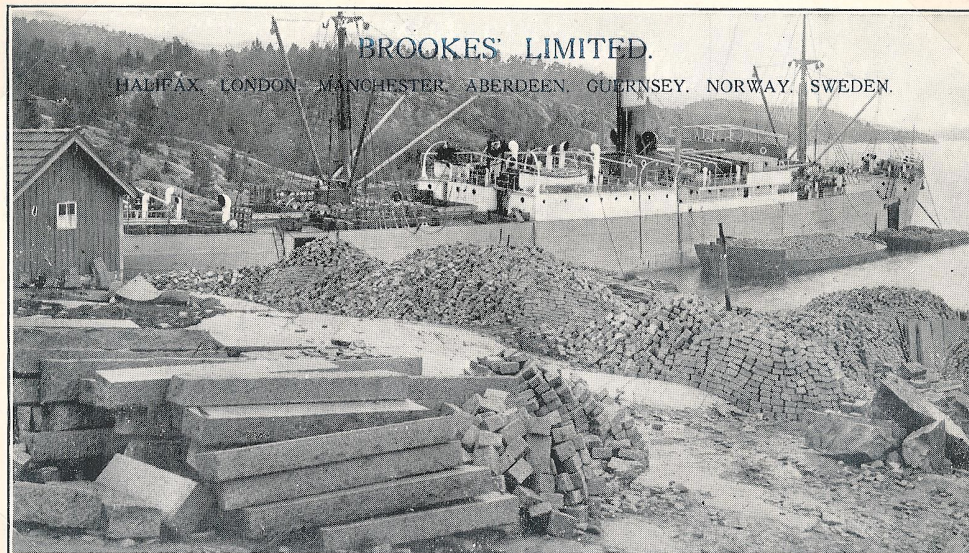
HALIFAX. LONDON. MANCHESTER. ABERDEEN. GUERNSEY. NORWAY. SWEDEN.



S.S. "CLAVERESK." Loading Setts at Ystehede Wharf for Argentine.

The quarries were right at the water's edge with wharfs all along the waterfront. The crane roads at Ystehede were two miles long. Granite quarried here was used to make setts, kerb stones and large blocks for dock work or girder bedstones. Stone was exported worldwide.

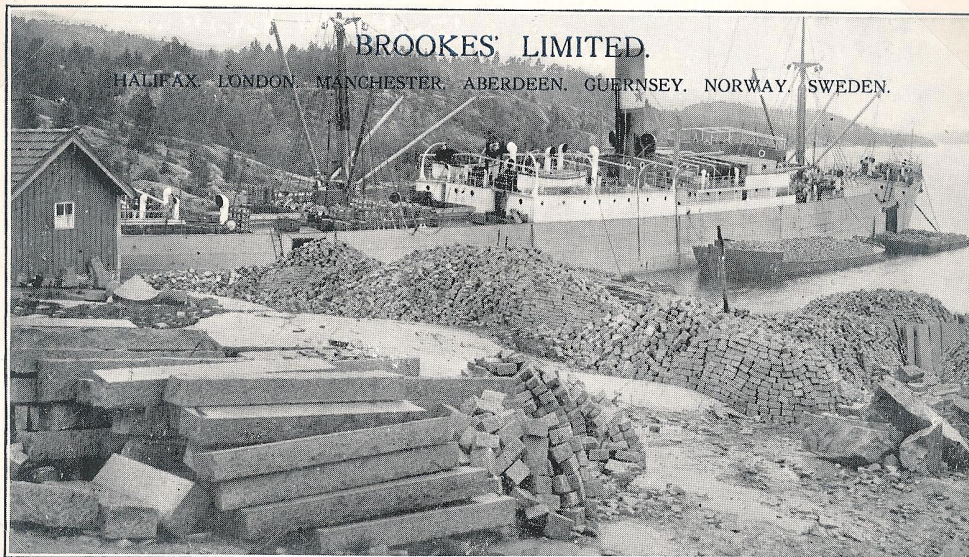
Divided back photolithographic card



S.S. "CLAVERESK." Loading Setts at Ystehede Wharf for Argentine.

On the Swedish side of the Idefjord at Pilegarden, Brookes Limited (trading as A/B Brookes Granite Co) controlled 8,000 acres of land. Pilegarden had a short length of narrow gauge railway with V-skips apparently to serve a chippings dump.

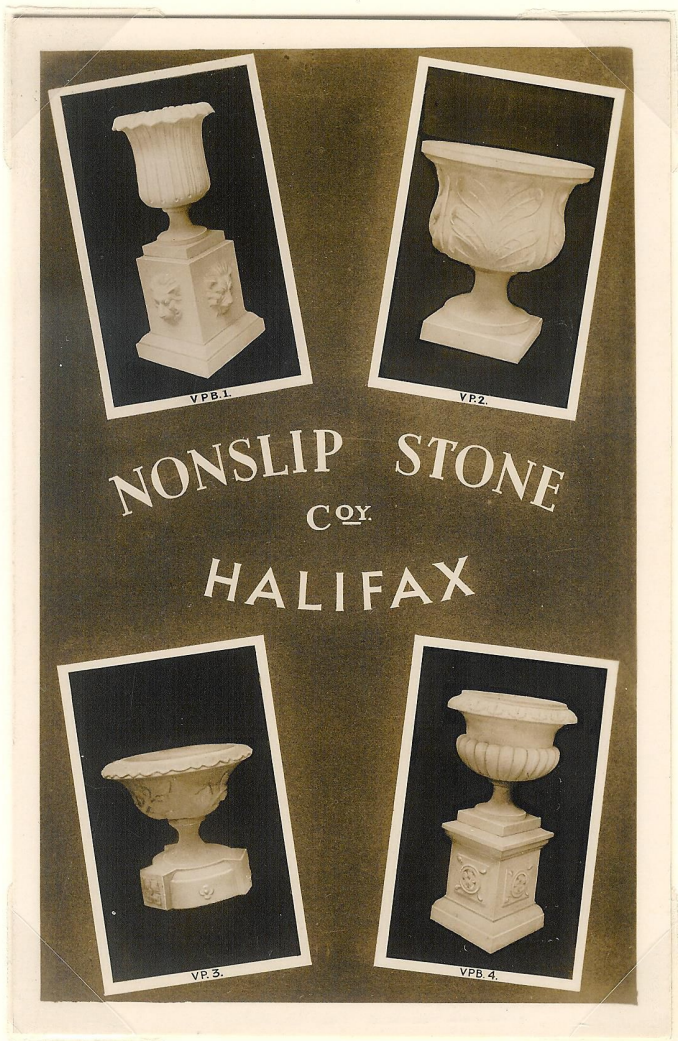
Divided back photolithographic card with incorrect caption – wrong ship and wrong location



S.S. "PRINCESSAN INGEBORG" loading Kerb and Setts at Pilegarden (Sweden) Wharf for Argentine.

Apparently, Brookes owned their own steamship but to date investigations have not revealed its name. Some of the stone went to Aberdeen in Scotland where Brookes had a yard for monumental stone work in Pittodrie Street. The quarries appear to have closed in the 1930s.

Divided back photolithographic card with correct caption – ship and location corrected



LEFT -

The Hard York Non Slip Stone Co. still advertised as a branch of Brookes Limited in 1906. They also had offices in Fredrikshald & Christiania (now Oslo) Norway. Garden Ornaments in the form of pedestal vases were also added to the product line.

Real photographic card by "Lilywhite" (Registered)

BELOW -

In addition to garden pedestal vases, a sundial, a bird bath and an ornamental lion were added to the product range. Pedestal vases ranged from 1ft 5½in to 4ft 1½in tall while the sundial and bird bath were 3ft 6in high and the ornamental lion 3ft 3in long.

Real photographic card by "Lilywhite" (Registered)



RIGHT -

The chippings of "Silex" (Hard York) stone were pulverised and reduced to their original sand. As the crushing strain of this rock is 2,200 tons per cubic foot, imagine the powerful machinery needed to reduce the stone back to sand.

Real photographic card of British Manufacture by "Lilywhite" (Registered)

BELOW -

Brooke stated that "the patented and secret processes follow closely upon nature's own lines". The granulated chippings and other ingredients were run into moulds and enormous pressure of well over 2,000 tons applied. Slabs were then taken out to the maturing grounds.

Real photographic card of British Manufacture by "Lilywhite" (Registered)



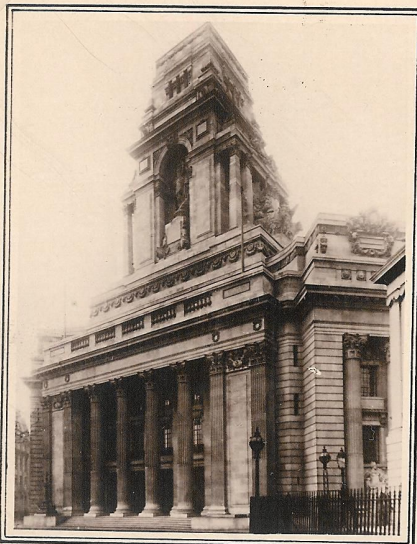
BRISTOL UNIVERSITY.

"SILEX"

HARD YORK STONE STEPS & PAVING USED THROUGHOUT
Sole Producers.

JOSEPH BROOKE & SONS.
HEAD OFFICES & QUARRIES,
HIPPERHOLME, HALIFAX, YORKS.

LONDON OFFICES. - 65 Victoria St., Westminster S.W.1.
MANCHESTER OFFICES. - 8 Exchange Street.



PORT OF LONDON AUTHORITY
↔ NEW OFFICES. ↔

"SILEX" STONE

Entrance Steps & Paving to
❖ Loggia. ❖

SUPPLIED BY

JOSEPH BROOKE & SONS.

"Silex" Stone Quarries,
HIPPERHOLME
HALIFAX.

Also LONDON & MANCHESTER.



"NONSLIP" STONE CO., Halifax, London, and Manchester.

At the Brookes Limited complex at Lightcliffe near Halifax, an area of 14 acres is set aside for the slabs lying edge-wise and several tiers in depth. The stock of Nonslip Stone thus awaiting maturity is never less than 400,000 yards (225 miles).

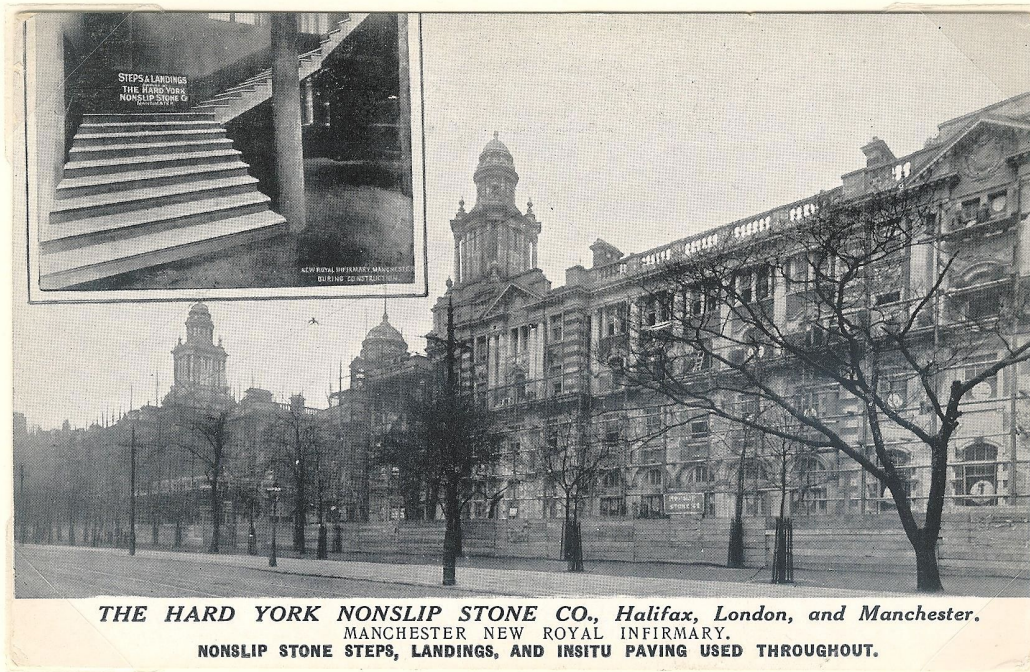
Divided back photolithographic card – Nonslip stone flags on the Parade at Leamington Spa



"NONSLIP" STONE CO., Halifax, London, and Manchester.

In order to become thoroughly matured, none are sent out from the maturing grounds in under 8 months from manufacture. Pavements where the nonslip stone has been laid are testament to the positive anti-slipping nature of the surface even on steep inclines.

Divided back photolithographic card – Nonslip stone flags in front of the Paisley Post Office



"A close inspection of the stone ready for market reveals a slab perfectly true, smooth, close texture, tough, elastic, regular in all dimensions, pleasing in colour and free alike from air cavities, fissures and lamination". With hammer & chisel its perfect workability is tested.

Divided back photolithographic card – Nonslip stone features at Manchester New Royal Infirmary



"It can be coped to work at all angles and in any size or shape with the greatest facility. The face is not one of meretricious cement. Nonslip is nonslip all through, and it wears evenly from first to last, as many experiments have demonstrated".

Divided back photolithographic card – Nonslip stone features at Gomersal Hall, Yorkshire



JUSTICIARY COURTS, GLASGOW.
"NONSLIP" STONE FLAGS, STEPS AND LANDINGS.
Supplied by "NONSLIP" STONE CO., Halifax, London, and Manchester.

Brookes patented Hard York Nonslip Stone was itself "By Royal Letters Patent" as they were "Contractors to His Majesty's Government, the Admiralty and War Offices, The Metropolitan & County Councils, Municipal and other Public Bodies throughout the Kingdom and Abroad".

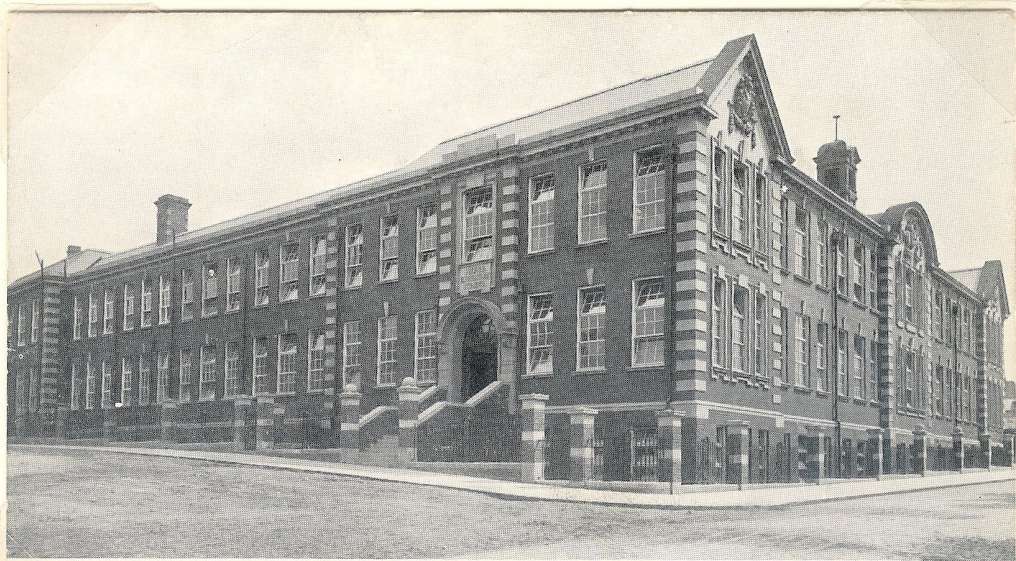
Divided back photolithographic card – Nonslip stone steps and landings at Judiciary Courts, Glasgow



ST. ENOCH'S STATION, GLASGOW.
"NONSLIP" STONE FLAGS—GRADIENT 1 IN 8.
Supplied by "NONSLIP" STONE CO., Halifax, London, and Manchester.

No fewer than twelve principal railway companies in the United Kingdom have "used the Nonslip Hard York Stone Flags, Channelling, Coping, Steps, etc. for their Busiest and Most Important Stations". As at 1906, close on fifty railway stations had the Brookes nonslip stone.

Divided back photolitho card – Nonslip stone flags on 1 in 8 gradient at St. Enoch's Station, Glasgow



Steps, Landings, Coping, Ridging, etc., supplied by "NONSLIP" STONE CO., Halifax, London, and Manchester.
 BLAKEY MOOR SCHOOLS, BLACKBURN. Messrs. Briggs, Wolstenholme & Thornely } Joint Architects.
 Messrs. Stones, Stones & Atkinson }

Claimed in its day to be more durable than any class of paving on the market, they used such phrases as "perfect foothold", "frost proof", "wears alike, full depth of slab", "never becomes slippery" and "face equal to a polished flag" to sell their wares.

Divided back photolithographic card – Nonslip stone products at Blakey Moor Schools, Blackburn



LAYING NONSLIP FLAGS, ST. PETER'S SQUARE, MANCHESTER.

Other phrases used to sell the product to the technically minded of the day were "copes and works like natural stone", "no laminations", "natural york stone appearance", "no air cavities", "non-porous" and "hydraulic pressure over 2,000 tons". Testimonials were also solicited.

Divided back photolitho card – Nonslip stone flag Opening Ceremony, St. Peter's Square, Manchester



Shop Premises for Mr. W. J. Buckley, Harrogate.
Architect: J. Houfe, Esq., Harrogate.

**"NONSLIP" STONE DRESSINGS, COPINGS,
PANEL, & C.,**

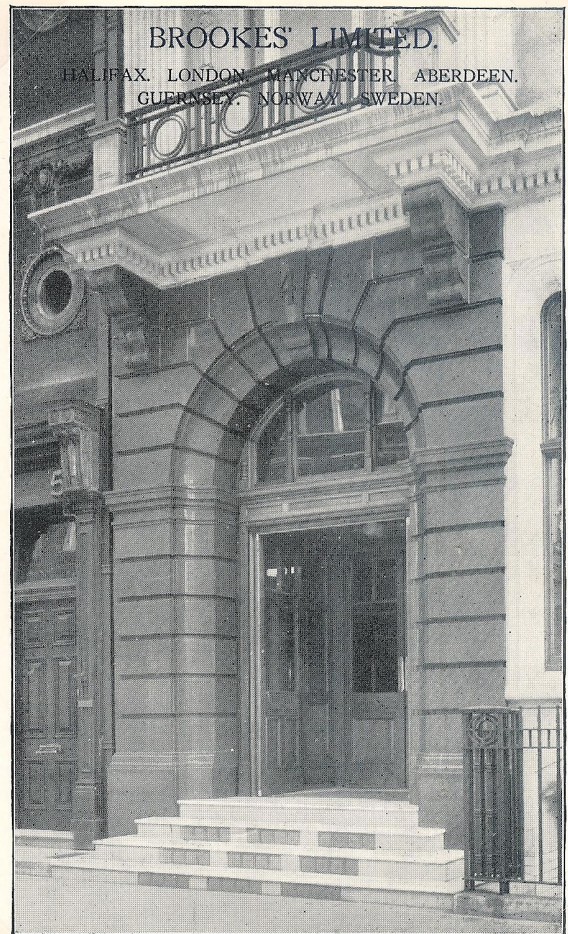
Supplied by **"NONSLIP" STONE CO.,**
Halifax, London, & Manchester,

Buildings large and small enjoyed the features of the nonslip stone product. Here we have a small shop frontage in Harrogate owned by Mr. W.J. Buckley utilising nonslip stone dressings. By 1906, no fewer than nine streets in Harrogate had nonslip stone paving.

Divided back photolitho card – Nonslip stone products employed in Harrogate

Polished Aberdeen Granite Doorways (which in turn had come from the Brookes quarries in Scandinavia) proudly flank the entrance to Barclays Bank in London. Barclays can trace its origins back to a goldsmith banking business established in the City of London in 1690.

Divided back photolithographic card



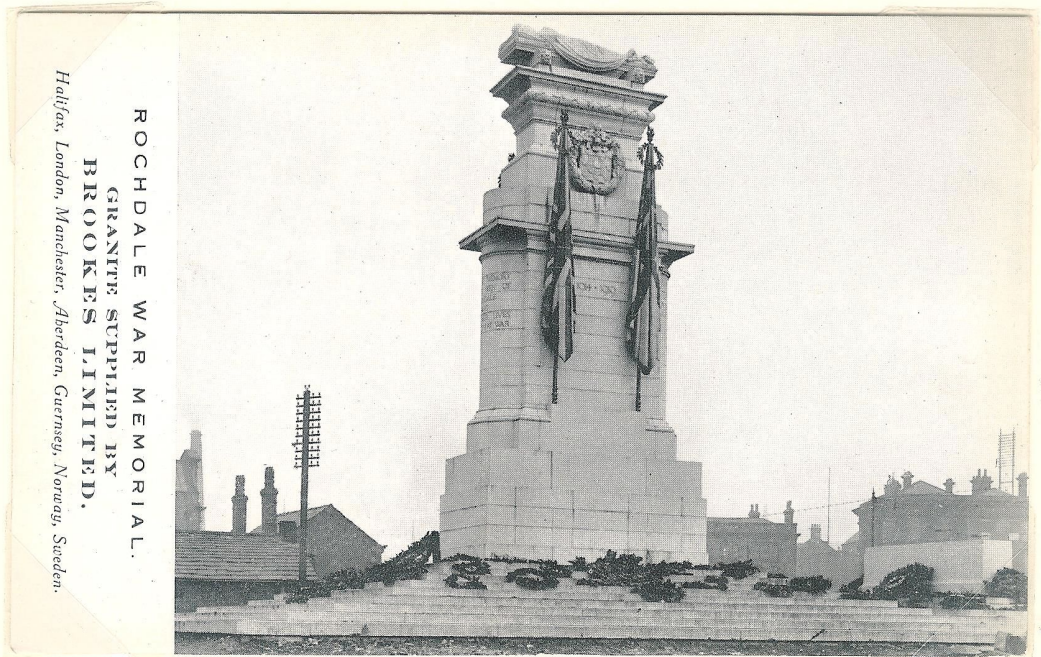
Polished Aberdeen Granite Doorways, Barclay's Bank, London.



ROCHDALE WAR MEMORIAL.
 GRANITE SUPPLIED BY
 BROOKES LIMITED.
 Halifax, London, Manchester, Aberdeen, Guernsey, Norway, Sweden.

On 10th Feb 1919, the Mayor of Rochdale, Alderman W. Davidson called a public meeting to discuss various proposals for the eventual form of the town's War Memorial. Designed by Sir Edwin Lutyens and with granite supplied by Brookes Limited, work started in 1922.

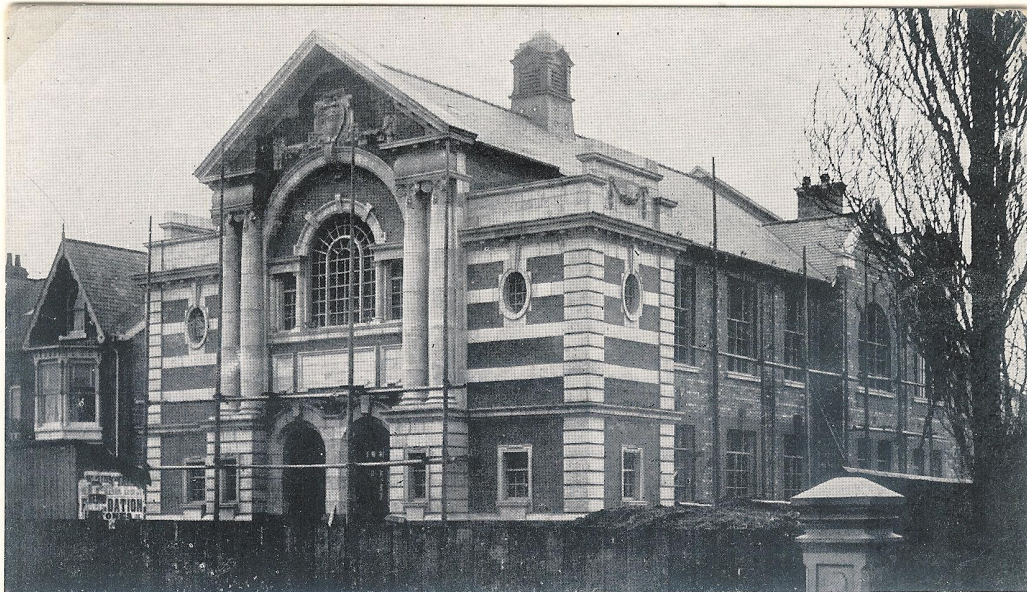
Divided back photolithographic card



ROCHDALE WAR MEMORIAL.
 GRANITE SUPPLIED BY
 BROOKES LIMITED.
 Halifax, London, Manchester, Aberdeen, Guernsey, Norway, Sweden.

The main feature of the Rochdale Memorial is the striking Cenotaph which rises to a height of 32ft. It is surmounted by a sarcophagus bearing the figure of an 'unknown soldier'. The unveiling ceremony was performed by the Earl of Derby on 26th Nov 1922.

Divided back photolithographic card



THE HARD YORK NONSLIP STONE CO., Halifax, London, and Manchester.
 AVENUE WESLEYAN CHURCH, MIDDLESBOROUGH (during construction).
 ARCHITECTURAL DRESSINGS ENTIRELY OF NONSLIP STONE. Architect, Alf. Forrester, Esq., Middlesborough.

Avenue Methodist Church, 32-40 The Avenue, Linthorpe, Middlesbrough, where Methodists worshiped for over 104 years. The last service was held on 26 Aug 2012. Building commenced in 1906. Finished in 1908. The Architect was Alfred Forrester.

Divided back photolithographic card



**NON-SLIP STONE CO.
 HALIFAX.**

LONDON. MANCHESTER.

**AVENUE WESLEYAN CHURCH,
 Middlesborough.**

This Church was erected twenty years ago.

The Architectural Dressings are entirely of "NONSLIP" STONE, and are in perfect condition.

We shall value your enquiries for Steps, Landings and Mouldings.

All the architectural dressings were entirely of Nonslip Stone provided by Brookes Ltd. Card can be dated to the late 1920s as it states "erected twenty years ago". Now a Grade II Heritage listed building (28/07/1988) and can still be booked for weddings.

Real photographic card of British Manufacture by "Lilywhite" (Registered)