

Koala – Kangaroo Count

During the introduction of the Living Together Definitives issues, in October 1989, the use of marginal emblems of the koala and or kangaroo were in the left and right selvedge of stamp sheets. Early issues of the series, some of the first reprints had no koala reprint indicator in right or left selvedge.

In setting up with original release dates of reprints were possible, reprinted stamps of the same stamp are displayed in order showing their new release dates. Release dates are shown as Day, Month, Year or just Month and Year. As faults are detected these will be shown.

The koala indicators were opposite every second stamp which was later changed to being opposite every stamp in both right and left selvedge.

On Self Adhesive stamps from rolls the reprint indicators were printed on the back of the rolls backing paper.

Booklet reprint indicators were printed in the left selvedge that was attached to the booklets cover, normally opposite the top left stamp.

The Koala Count is a way to help collectors identify reprints of recent Australian definitive stamps.

KOALA COUNT



Reference:
ACSC catalogues.
Internet sites.
Australian Stamp Bulletin.
Australia Post.

1988 – 1992 Living Together

5c Parliament

Designer: Bronwyn Halls, Melbourne.

Perforation: 14.01 x 13.98 Comb.

Printer: Sheet-fed photo-litho printed by CPE Australia Pty. Ltd., Scoresby.

Usage: Make up use.



First Reprint: Circa mid 1989. No koala reprint indicator in selvedge.
CPL unwatermarked white paper incorporating helecon.

10c Transport

Designer: Liz Honey, Melbourne.

Perforation: 14.01 x 13.98

Printer: Sheet-fed photo-litho printed by Leigh-Mardon Pty. Ltd., Moorabbin.

Usage: Make-up use.



First Reprint: Circa early 1989. No koala reprint indicator.
CPL unwatermarked white paper incorporating helecon.

1988 – 1992 Living Together

15c Sport

Designer: Geoff Cook, Melbourne.

Printer: Sheet-fed photo-litho printed by Leigh-Mardon Pty. Ltd., Moorabbin.

Perforation: 14.01 x 13.98 Comb. **Usage:** Make-up use.



First Reprint: April 1990. One koala reprint indicator in right selvedge. Mint / Used.
One koala reprint indicator in left selvedge.
CPL unwatermarked white paper incorporating helecon.



Second Reprint: March 1994. Two koala reprint indicators in right selvedge.
CPL unwatermarked white paper incorporating helecon.



Second Reprint: Two koala reprint indicators in left selvedge. Mint / Used.

1988 – 1992 Living Together

25c Housing

Designer: Craig Smith, Adelaide.

Printer: Sheet-fed photo-litho printed by Leigh-Mardon Pty. Ltd., Moorabbin.

Perforation: 14.01 x 13.98 Comb.

Usage: Make-up use.



First Reprint: November 1990. One reprint koala indicator in right selvedge. Mint / Used.

Paper: Harrison unwatermarked white paper incorporating helecon.

First reprint indicators appear opposite every second stamp in the selvedge.



First Reprint: One koala reprint indicator in left and right selvedge.

1988 – 1992 Living Together Definitives

25c Housing



Second Reprint: May 1993. Two koala reprint indicators in left selvedge. Mint / Used.

Paper: Harrison unwatermarked white paper incorporating helecon.
Second koala reprint appears opposite every stamp.



Second Reprint: May 1993. Two koala reprint indicators in right selvedge.



Third Reprint: September 1994. Three koala reprint indicators in right selvedge.
CPL unwatermarked white paper incorporating helecon.

1988 – 1992 Living Together

25c Housing

Designer: Craig Smith, Adelaide.

Perforations: 14.01 x 13.98



Third Reprint: September 1994. Three koala reprint indicators in left selvedge. CPL unwatermarked white paper incorporating helecton.



Fourth Reprint: July 1995. Four koala reprint indicators in left and right selvedge. **Perforations:** 13.98 x 14.01 comb. a change of 90 degrees.

Fourth Reprint: Four koala reprint indicators in right selvedge. **Perforation: 14.68**

New perforation was a result of introducing a new comb rather than repairing the existing one.



1988 – 1992 Living Together

30c Welfare

Designer: Ron Tandberg, Melbourne.

Perforations: 14.01 x 13.98 Comb.

Usage: Make up use.



First Reprint: Circa mid 1989. No koala reprint indicator in left or right selvedge. Harrison unwatermarked white paper incorporating helecon.



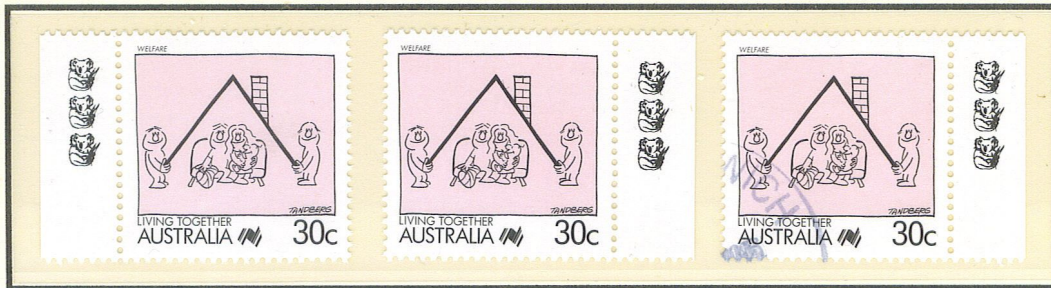
Second Reprint: April 1990. Two koala reprint indicator in left selvedge. Top and Bottom Blocks from left pane.

1988 – 1992 Living Together

30c Welfare



Second Reprint: April 1990. Two koala reprint indicators in left and right selvedge. Harrison unwatermarked white paper incorporating helecon.



Third Reprint: August 1991. Three koala reprint indicators in left and right selvedge.

CPL unwatermarked white paper incorporating helecon.



Third Reprint: August 1991. Three koala reprint indicators in left selvedge.

CPL unwatermarked white paper incorporating helecon.

1988 – 1992 Living Together

30c Welfare

Fourth World Bowls Championship
Frankston, Victoria, Australia
16 Jan – 2 Feb, 1980

A F BULL
44/7 Sixth Ave.
WOORIM QLD 4507



11 JUL 2006



Third Reprint: August 1991. Three koala reprint indicators in right selvedge, on PSE as make up postage.

40c Recreation



Designer: Roland Harvey, Melbourne.
Perforation: 13.98 x 14.01
Usage: Make up use.

First Reprint: Circa mid 1989. No koala reprint indicator in selvedge.

1988 – 1992 Living Together

45c Health

Designer: Jenny Coopes, Sydney.

Perforation: 14.01 x 13.98 comb.

Usage: Up to 1 October 1988 45c was (a) the Zone 1 rate for surface air mail; and (b) the sea mail rate for letters to Asia/Oceania. After 1 October 1988 45c was for make up use only. From 2 January 1992 45c became (c) the base letter rate within Australia.



First Reprint: January 1991. One koala reprint indicator in left and right selvedge.
CPL unwatermarked white paper incorporating helecon.

Printer: Sheet-fed photo-litho printed by Leigh Mardon Pty. Ltd., Moorabbin.



First Reprint: One koala reprint indicator in right selvedge.

1988 – 1992 Living Together

45c Health

Designer: Jenny Coopes, Sydney.

Perforation: 14.01 x 13.98 comb.

Printer: Sheet-fed photo-litho printed by Leigh Mardon Pty. Ltd., Scorsby plant.



Second Reprint: June 1991. Two koala reprint indicators in left and right selvedge. Harrison unwatermarked white paper incorporating helecon.



Second Reprint: Two koala reprint indicators in left selvedge.

1988 – 1992 Living Together

50c Mining

Designer: George Haddon.

Perforation: 14.01 x 13 98 comb.

Usage: Make up use.



First Reprint: June 1990. One koala reprint indicator in left and right selvedge.
Printer: Sheet-fed photo-litho printed by Leigh Mardon Pty. Ltd., Moorabbin.



First Reprint: June 1990. One koala reprint indicator in right selvedge.
Harrison unwatermarked white paper incorporating helecon.

1988 – 1992 Living Together

50c Mining

Designer: George Haddon.

Perforation: 14.01 x 13.98.

Usage: Make up use.



Second Reprint: April 1991. Two koala reprint indicators in left and right selvedge. Harrison unwatermarked white paper incorporating helecon.



Second Reprint: Two koala reprint indicators in right selvedge.

1988 – 1992 Living Together

55c Education

Designer: Victoria Roberts.

Perforation: 14.01 x 13.98 comb.

Printer: Sheet-fed photo-litho printed by Leigh Mardon Pty. Ltd., Moorabbin.

Usage: Up to 1 October 1988 55c was (a) the Zone 1 air mail rate; and (b) the Zone 2 surface air lifted rate. After 1 October 1988 55c became (c) the intrastate surface rate for non-standard articles; and (d) the Zone 1 surface air lifted rate.



First Reprint: September 1988. No koala reprint indicator in left or right selvedge.
Harrison unwatermarked white paper incorporating helecon.

60c Armed Forces

Designer: Bill Green, Melbourne.

Perforation: 13.98 x 14.01 comb.



First Reprint: October 1989. No koala reprint indicator in left or right selvedge.
CPL unwatermarked white paper incorporating helecon.

1988 – 1992 Living Together

60c Armed Forces

Designer: Bill Green, Melbourne.

Printer: Sheet-fed photo-litho printed by Leigh-Mardon Pty. Ltd., Scoresby.

Perforation: 13.98 x 14.01 comb.

Usage: Up to 1 October 1988 60c was (a) the Zone 3 air mail rate, and (b) Zone 1 surface air lifted rate for non-standard articles. From 1 October to 23 August 1989 60c became (c) the interstate surface rate for non-standard articles; and (d) the Zone 1 air mail rate. From 23 August 1989 to 27 August 1990 60c remained (c) and became (e) the Zone 1 surface air lifted letter rate. After 23 August 1990 60c was largely for make-up use.



Second Reprint: October 1990. Two koala reprint indicators in right selvedge. CPL unwatermarked white paper incorporating helecon.



Second Reprint: Two koala reprint indicators in left selvedge.

1988 – 1992 Living Together

65c Telecommunications

Designer: Bruce Petty, Sydney.

Printer: Sheet-fed photo-litho printed by Leigh-Mardon Pty. Ltd., Scoresby.

Perforation: 13.98 x 14.01 comb.



First Reprint: July 1989. No koala reprint indicator in left or right selvedge.
Harrison unwatermarked white paper incorporating helecon.



Second Reprint: December 1989. Two koala reprint indicators in right selvedge.
CPL unwatermarked white paper incorporating helecon.



Second Reprint: Two koala reprint indicators in left selvedge.